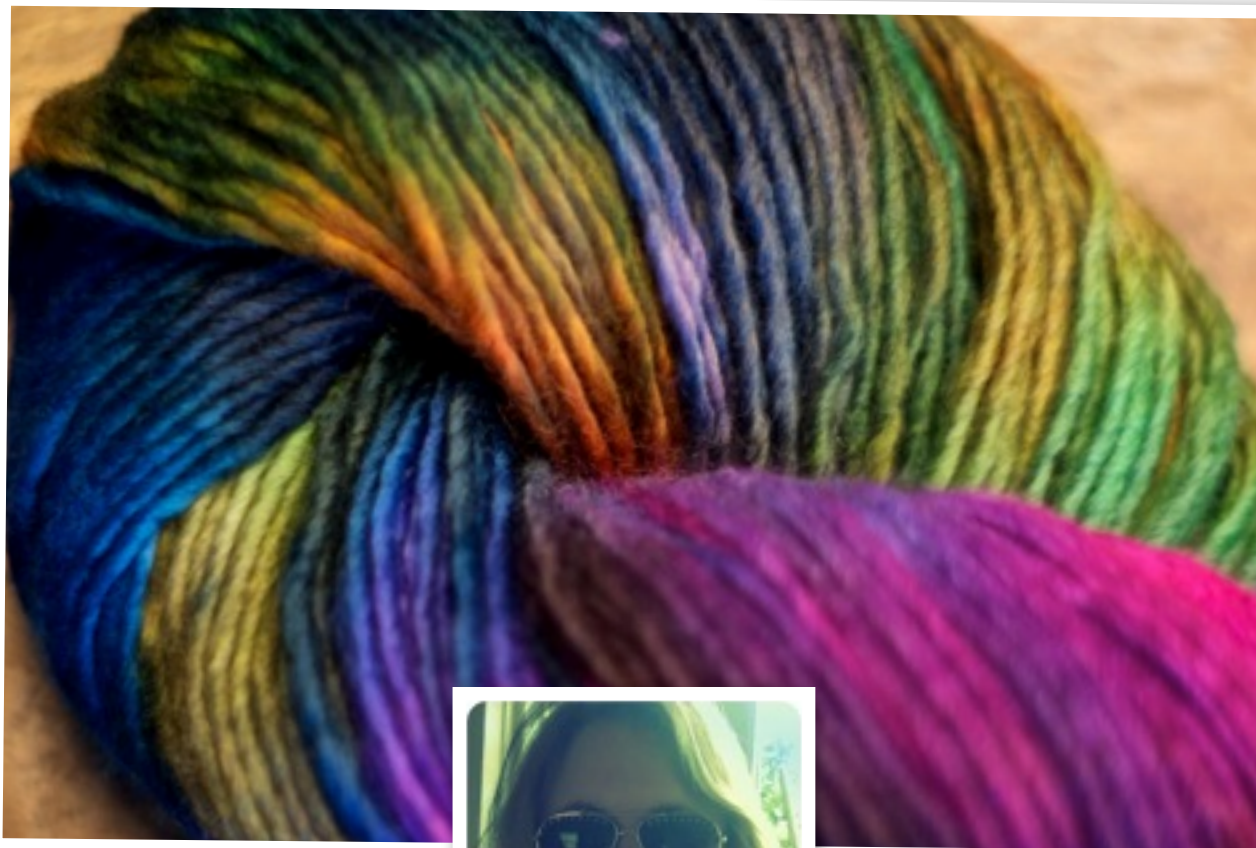




Wool Wench
DYE DAY!



Ever wondered how to get your kettle dyed yarns and fibers multicoloured without turning muddy? Or create lovely hand dyed colour blends in your spun skeins? This is the day we will experiment with colours and techniques, both kettle dyeing and 'painting' individual yarns and roving.

PROGRAM

Our program for the day is based on fun with colour. We will start with identifying your colour preferences, doing some exercises to challenge your 'usual' choices and experimenting with new combinations.

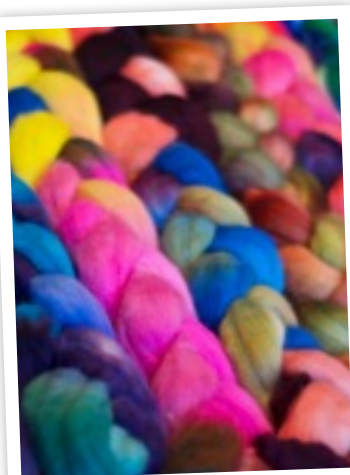
We will experiment with dye techniques, I will share with you my own way of kettle dyeing multicoloured roving and skeins, keeping the intensity of the colour that you want. We will explore different ways of getting colour onto your fiber, including 'splodge' painting, and over-dyeing. After that we will look at

the different methods for heat fixing your dyed fibers, and why I never use the microwave to do it . I will show you my preferred way to get great and consistent results in your dye fixing.

Numbers are limited so we will all have time and space to use at least two different methods AND set our dyes ready to take home and dry.

If you have your own dye pot, please bring it with you!

***Register & more info at
Inspire Fibres
tracywhite@inspire.net.nz
or Contact
suzy@woolwench.com***



WHAT TO BRING WITH YOU...

BRING ANY PRE-
SPUN YARNS YOU
WOULD LIKE TO
DYE. BRING ANY
DYE 'FAILS' TO
RESCUE WITH SOME
OVERDYING!



If you have a dye pot for kettle dyeing - please bring it too!

If you have any questions, message me on Facebook:
www.facebook.com/woolwenchyarns
or use the contact page at www.woolwench.com

ANY PHOTOS OR COLOUR
INSPIRATION IDEAS YOU
WOULD LIKE TO USE IN
YOUR YARNS